

CMG Speech SQL Express Backup Configuration Guide

JUNE 2015

VIRTUAL RECEPTION



NOTICE

The information contained in this document is believed to be accurate in all respects but is not warranted by Mitel Networks™ Corporation (MITEL®). The information is subject to change without notice and should not be construed in any way as a commitment by Mitel or any of its affiliates or subsidiaries. Mitel and its affiliates and subsidiaries assume no responsibility for any errors or omissions in this document. Revisions of this document or new editions of it may be issued to incorporate such changes.

No part of this document can be reproduced or transmitted in any form or by any means - electronic or mechanical - for any purpose without written permission from Mitel Networks Corporation.

TRADEMARKS

Mitel is a trademark of Mitel Networks Corporation.

Windows and Microsoft are trademarks of Microsoft Corporation.

Adobe Acrobat Reader is a registered trademark of Adobe Systems Incorporated.

Other product names mentioned in this document may be trademarks of their respective companies and are hereby acknowledged.

CMG Speech SQL Express Backup Configuration Guide
June 2015

®,™ Trademark of Mitel Networks Corporation
© Copyright 2015 Mitel Networks Corporation
All rights reserved

CONTENTS

1	Introduction	1
2	SQL Express Jobs as a Scheduled Task	2

1 INTRODUCTION

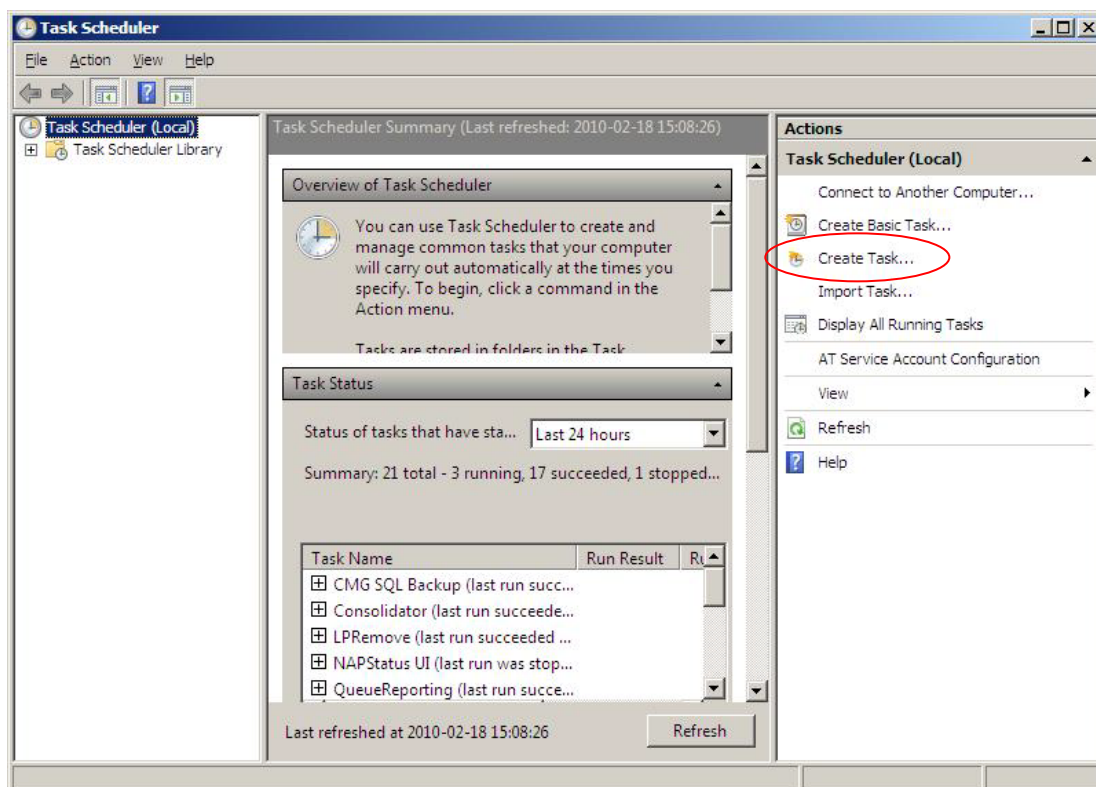
This document describes how to configure CMG Speech SQL Express jobs on Windows Server 2008.

Windows Scheduled Task function is used to perform the tasks.

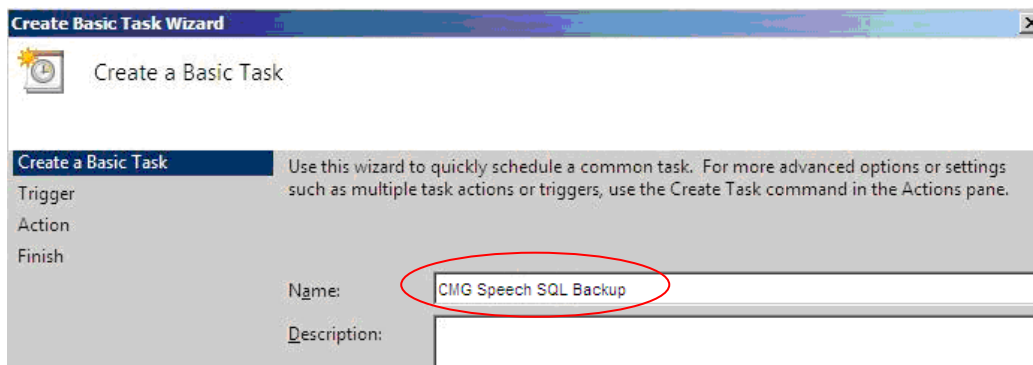
2 SQL EXPRESS JOBS AS A SCHEDULED TASK

To add the SQL Express backup of the CMG Speech database as a scheduled task, do the following:

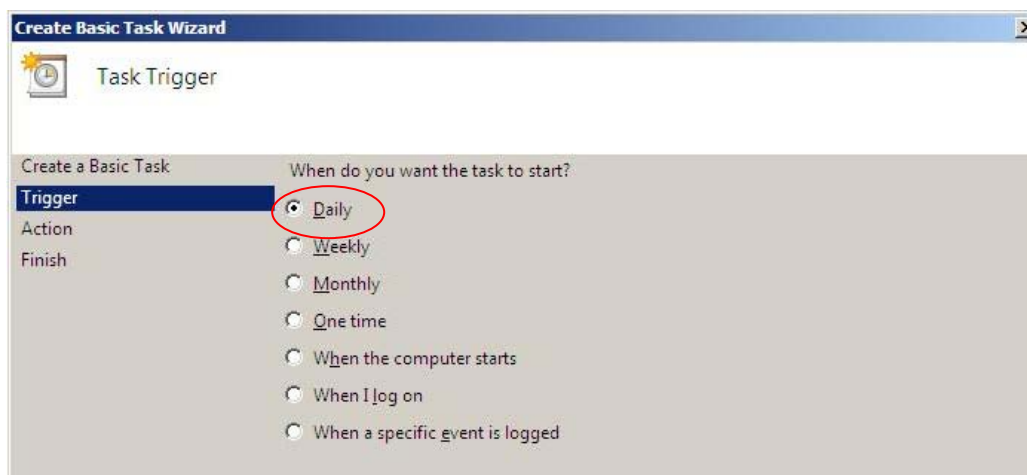
1. Open Task Scheduler (for example from **Start -> All Programs -> Administrative Tools -> Task Scheduler**).
2. Select **Create Basic Task**.



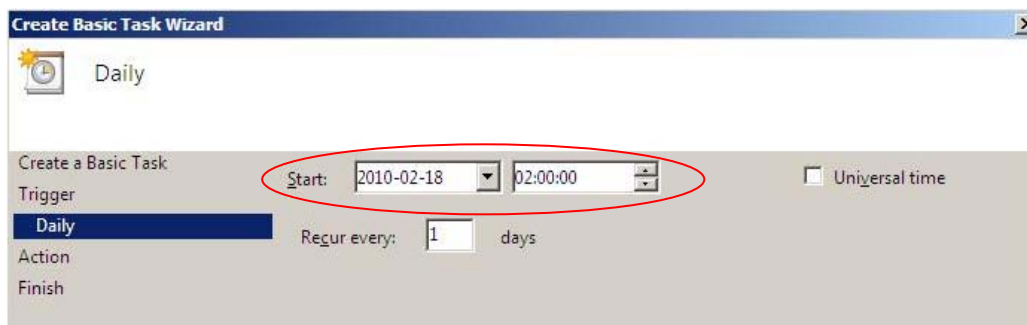
3. Type a name for the task, and then click **Next**.



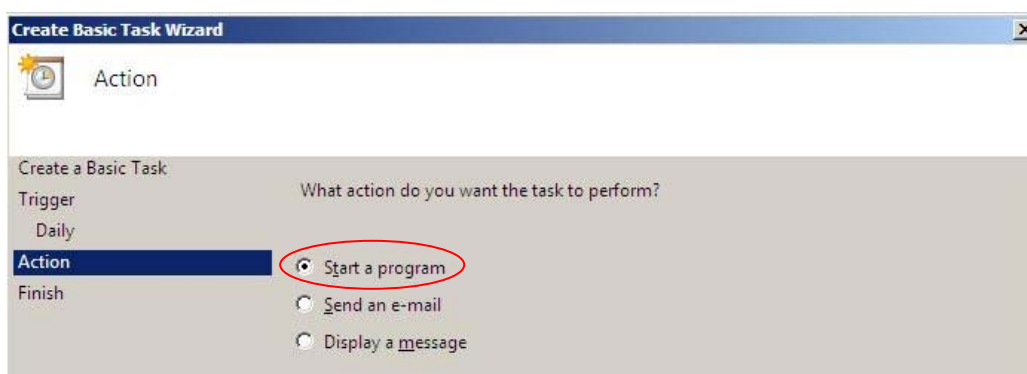
4. Select how often the task should be performed (for example **Daily**), and click **Next**.



5. Select the start time and day for the task, and click **Next**.

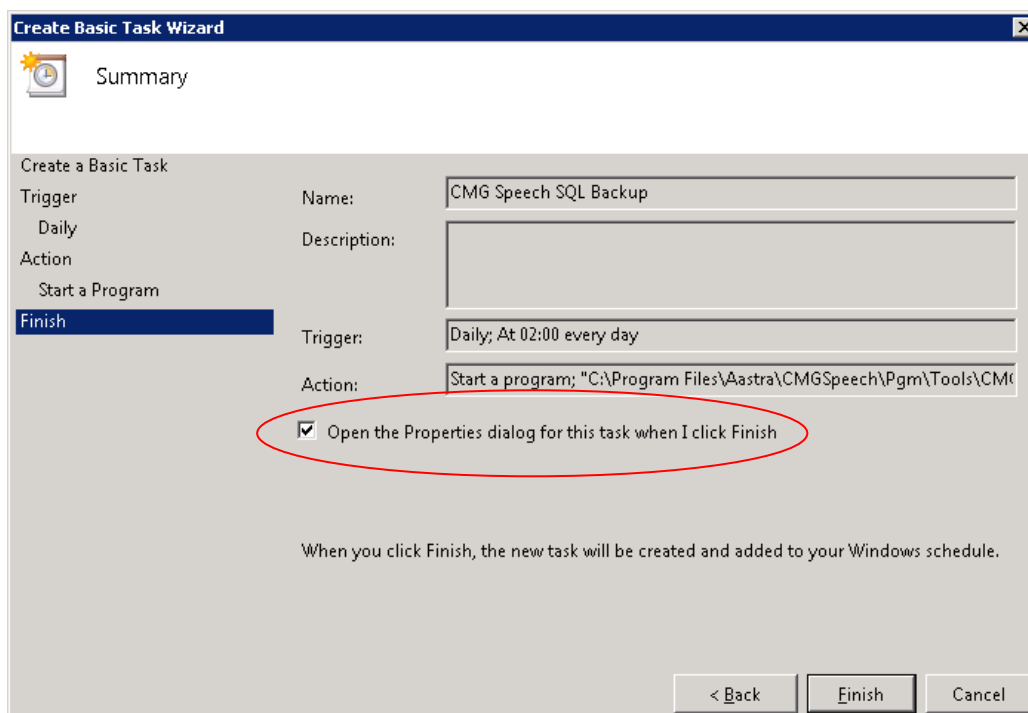


6. Select **Start a program**, and click **Next**.

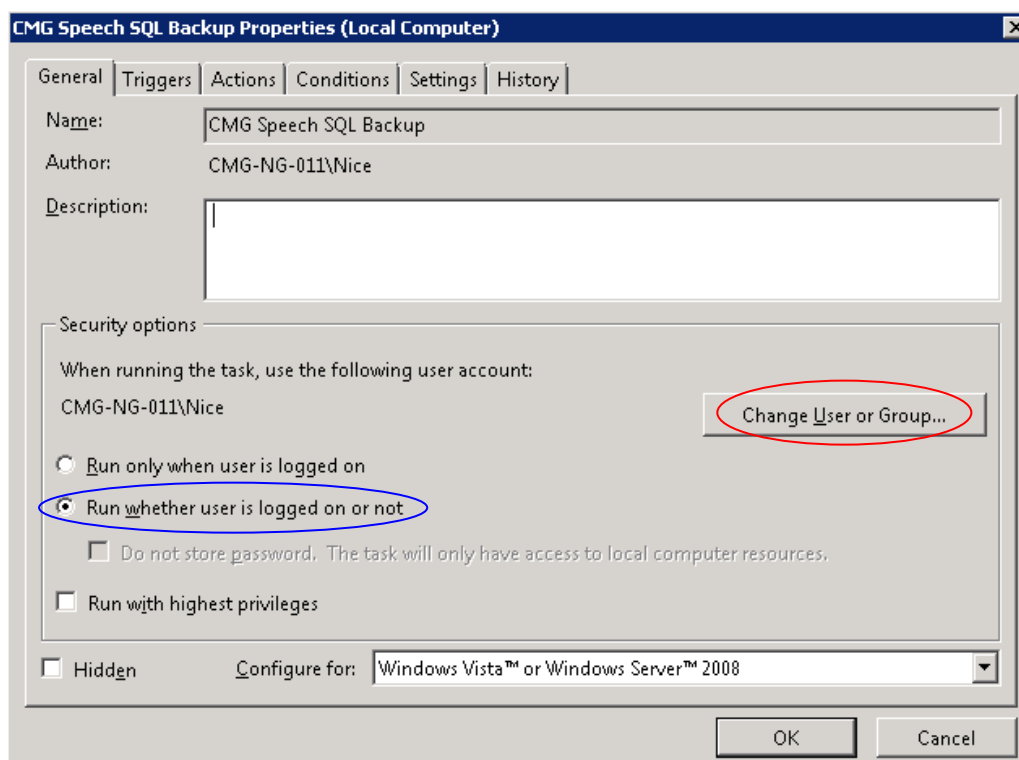


7. Browse for, and select the file `CMGSpeechSQLExpressBackup.cmd` found in the folder `\<CMGSpeech>\Pgm\Tools`.
8. When `CMGSpeechSQLExpressBackup.cmd` is selected, click **Next**.

9. On the summary page of the Create Basic Task Wizard, select **Open the properties dialog for this task when I click Finish**, and then click **Finish**.

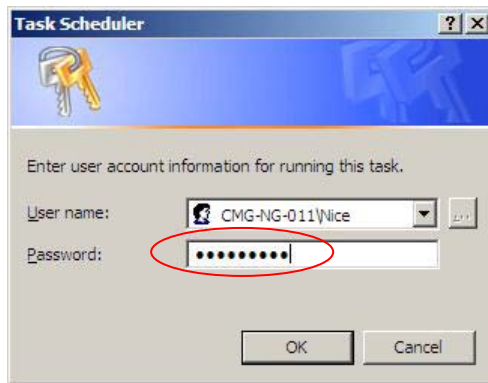


10. The Backup Properties dialog is shown:
Click **Change User or Group...** to select the user to run this job.
This user has to be a Local Administrator.

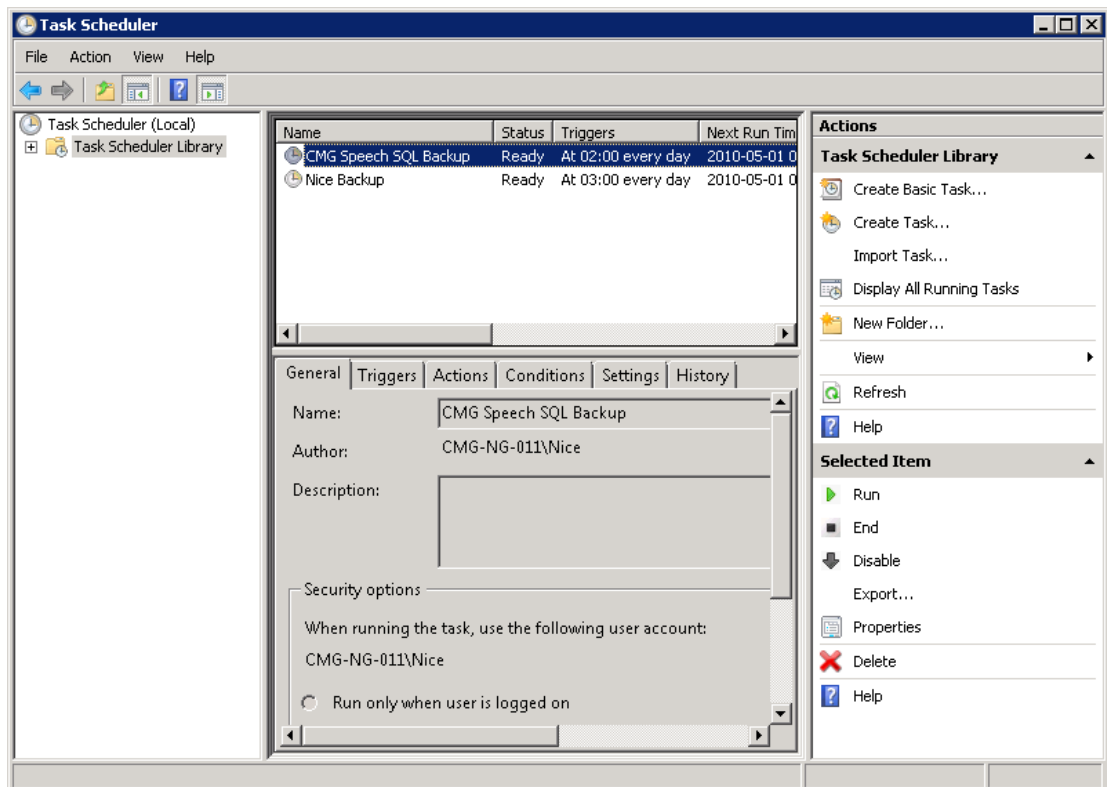


11. Select **Run whether user is logged on or not**.
12. Click **OK**.

13. Enter the user's password.



14. The job has been created.





Mitel.com

© Copyright 2015, Mitel Networks Corporation. All Rights Reserved. The Mitel word and logo are trademarks of Mitel Networks Corporation. Any reference to third party trademarks are for reference only and Mitel makes no representation of ownership of these marks.