

CMG Speech Administration Flow

SEPTEMBER 2017

VIRTUAL RECEPTION



NOTICE

The information contained in this document is believed to be accurate in all respects but is not warranted by Mitel Networks™ Corporation (MITEL®). The information is subject to change without notice and should not be construed in any way as a commitment by Mitel or any of its affiliates or subsidiaries. Mitel and its affiliates and subsidiaries assume no responsibility for any errors or omissions in this document. Revisions of this document or new editions of it may be issued to incorporate such changes.

No part of this document can be reproduced or transmitted in any form or by any means - electronic or mechanical - for any purpose without written permission from Mitel Networks Corporation.

TRADEMARKS

Mitel is a trademark of Mitel Networks Corporation.

Windows and Microsoft are trademarks of Microsoft Corporation.

Adobe Acrobat Reader is a registered trademark of Adobe Systems Incorporated.

Other product names mentioned in this document may be trademarks of their respective companies and are hereby acknowledged.

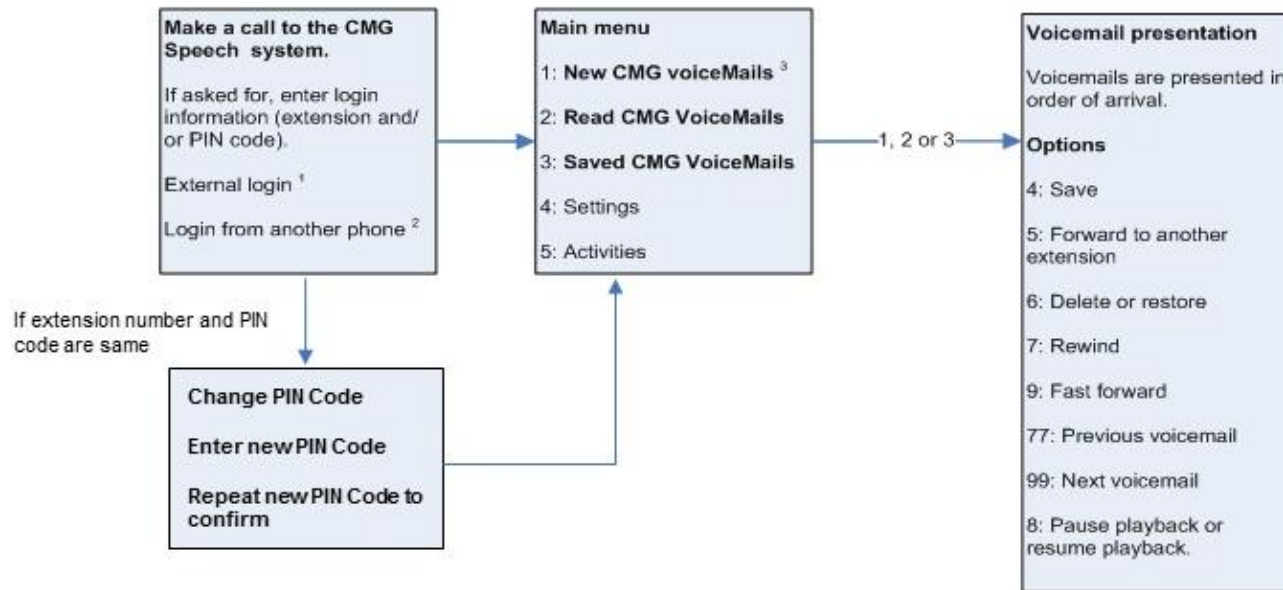
CMG Speech Administration Flow - Virtual Reception
September 2017

®,™ Trademark of Mitel Networks Corporation
© Copyright 2017 Mitel Networks Corporation
All rights reserved

CMG Speech Administration – Managing CMG VoiceMails

Telephone number to
my CMG Speech
system:

.....



GENERAL USAGE

The information presented is controlled by the information level, but the options are the same.

At any time, press 0 for help or further instructions.

To return to the previous menu, or abort an ongoing entry, press *.

End the call by hanging up.

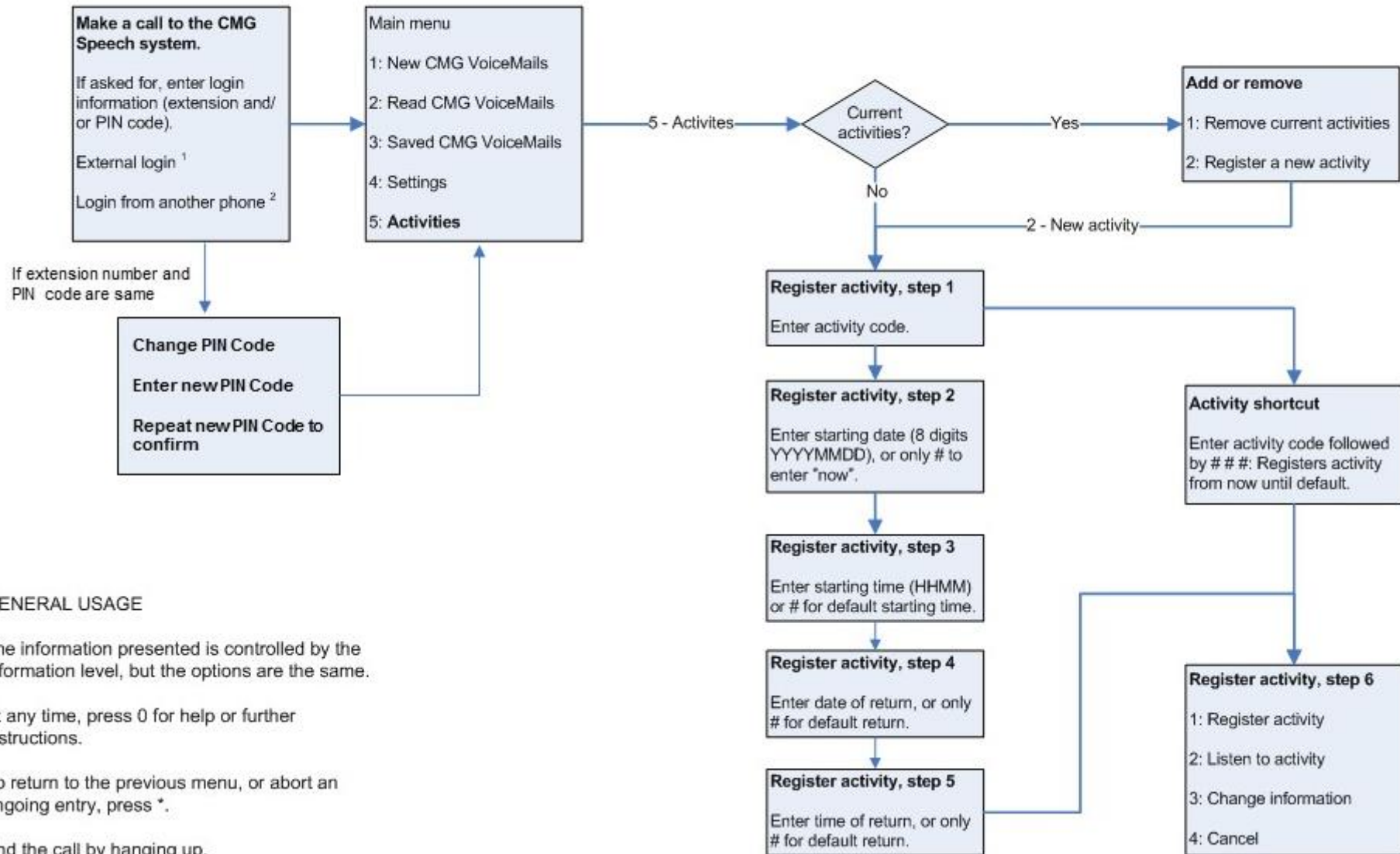
NOTE!

¹ The CMG Speech system number is a regular extension, so dial the complete number. Then follow the instructions.

² Dial the CMG Speech number and press *. Follow the instructions.

³ If there are new CMG VoiceMails, they are presented immediately after login.

CMG Speech Administration – Managing Activities



GENERAL USAGE

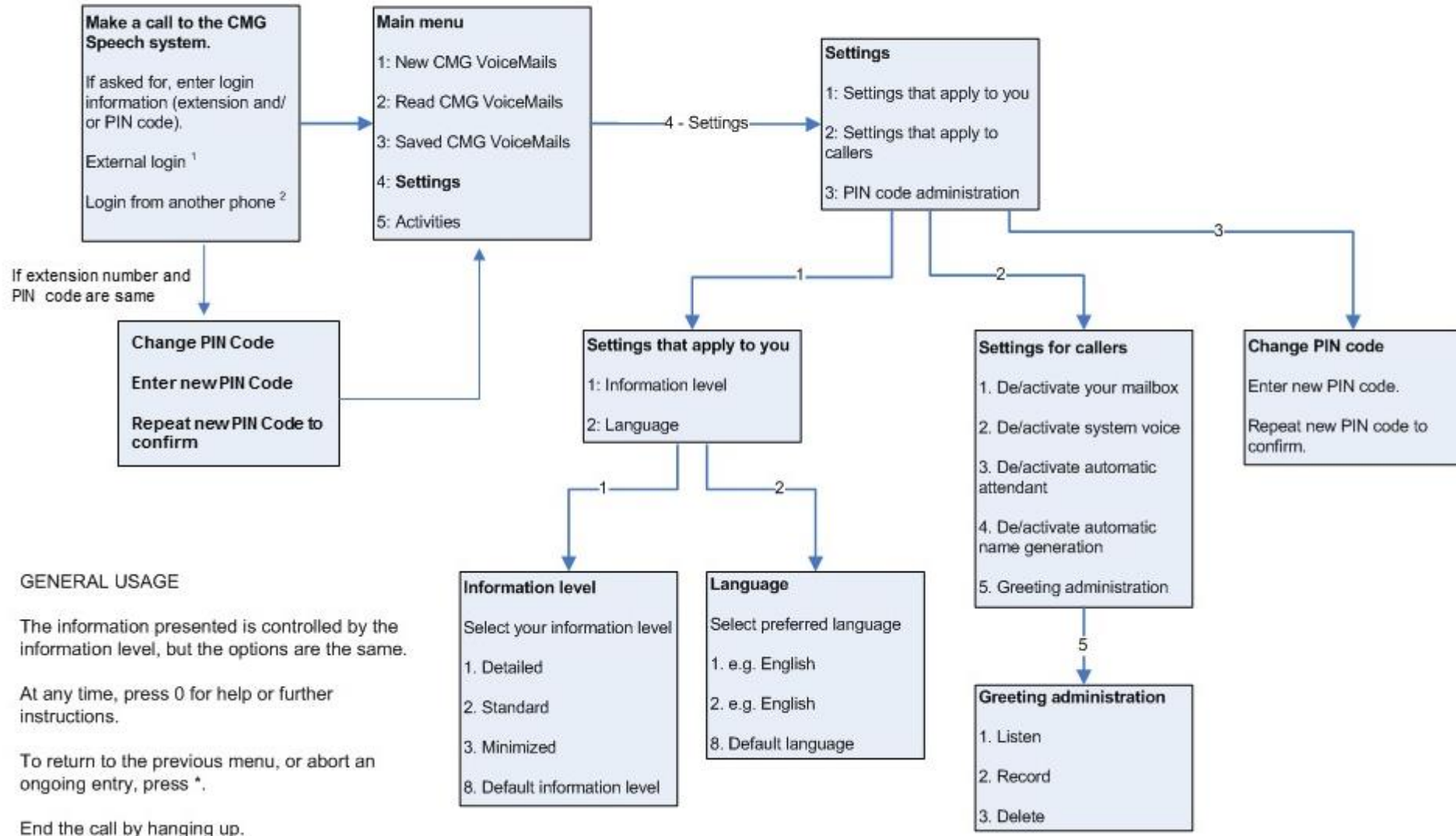
The information presented is controlled by the information level, but the options are the same.

At any time, press 0 for help or further instructions.

To return to the previous menu, or abort an ongoing entry, press *.

End the call by hanging up.

CMG Speech Administration – Managing Settings





Mitel.com

© Copyright 2017, Mitel Networks Corporation. All Rights Reserved. The Mitel word and logo are trademarks of Mitel Networks Corporation. Any reference to third party trademarks are for reference only and Mitel makes no representation of ownership of these marks.