

MX-ONE Traffic Manager 1.4 – LDS Configuration

USER GUIDE



NOTICE

The information contained in this document is believed to be accurate in all respects but is not warranted by Mitel Networks™ Corporation (MITEL®). Mitel makes no warranty of any kind with regards to this material, including, but not limited to, the implied warranties of merchantability and fitness for a particular purpose. The information is subject to change without notice and should not be construed in any way as a commitment by Mitel or any of its affiliates or subsidiaries. Mitel and its affiliates and subsidiaries assume no responsibility for any errors or omissions in this document. Revisions of this document or new editions of it may be issued to incorporate such changes.

No part of this document can be reproduced or transmitted in any form or by any means - electronic or mechanical - for any purpose without written permission from Mitel Networks Corporation.

TRADEMARKS

The trademarks, service marks, logos and graphics (collectively "Trademarks") appearing on Mitel's Internet sites or in its publications are registered and unregistered trademarks of Mitel Networks Corporation (MNC) or its subsidiaries (collectively "Mitel") or others. Use of the Trademarks is prohibited without the express consent from Mitel. Please contact our legal department at legal@mitel.com for additional information. For a list of the worldwide Mitel Networks Corporation registered trademarks, please refer to the website: <http://www.mitel.com/trademarks>.

•

© Copyright 2018, Mitel Networks Corporation







All rights reserved

CONTENTS

| | | |
|----------|--|----------|
| 1 | USING LDS CONFIGURATION | 1 |
| 1.1 | LDS CONFIGURATION HELP | 1 |
| 1.1.1 | TIPS FOR USING HELP | 1 |
| 1.1.2 | PRINTING HELP | 1 |
| 1.1.3 | GETTING HELP WHILE YOU WORK | 1 |
| 2 | USER INTERFACE..... | 2 |
| 2.1 | LDS CONFIGURATION WINDOW | 2 |
| 2.2 | APPLICATION MENU | 2 |
| 2.3 | VIEW MENU | 3 |
| 2.4 | STATUS BAR | 3 |
| 2.5 | LDS CLIENT | 3 |
| 3 | REPLICATION..... | 4 |
| 3.1 | REPLICATE ALL DEPARTMENTS | 4 |
| 3.2 | REPLICATE A SPECIFIC DEPARTMENT | 4 |
| 4 | SUBSCRIPTION CONFIGURATION..... | 6 |
| 5 | PUBLICATION CONFIGURATION | 7 |

1 USING LDS CONFIGURATION

1.1 LDS CONFIGURATION HELP

Help topics are displayed in a tri-pane Explorer View Help window where  **Contents**,  **Index**, and  **Search** tabs appear to the left of the topic pane, and the selected topic appears on the right in the topic pane. The  **Contents** tab is the default, and stays synchronized with the topic displayed in the topic pane. Click the  **Index** tab to search for topics by using an index of Help subjects. Click the  **Search** tab to use a full-text search for specific words or phrases.

1.1.1 TIPS FOR USING HELP

When viewing Help, you can maximize the window or resize it if you want. Click **Help Topics** to show or hide the Navigation Pane. Click **>>** to go to the next topic in the browse sequence. Click **<<** to go to the previous topic in the browse sequence. The **Options** menu provides additional display controls.

1.1.2 PRINTING HELP

Click the **Print** button to print the current topic. To print the entire help file you need to have Microsoft Word or Word Viewer installed on the PC. Word Viewer is a free download from Microsoft's web site.

To print the entire help file:

1. Right-click on the *MSPServHelp.doc* file in the *MSP_SMRSHELP* directory.
2. Click **Print** on the pop-up menu.

1.1.3 GETTING HELP WHILE YOU WORK

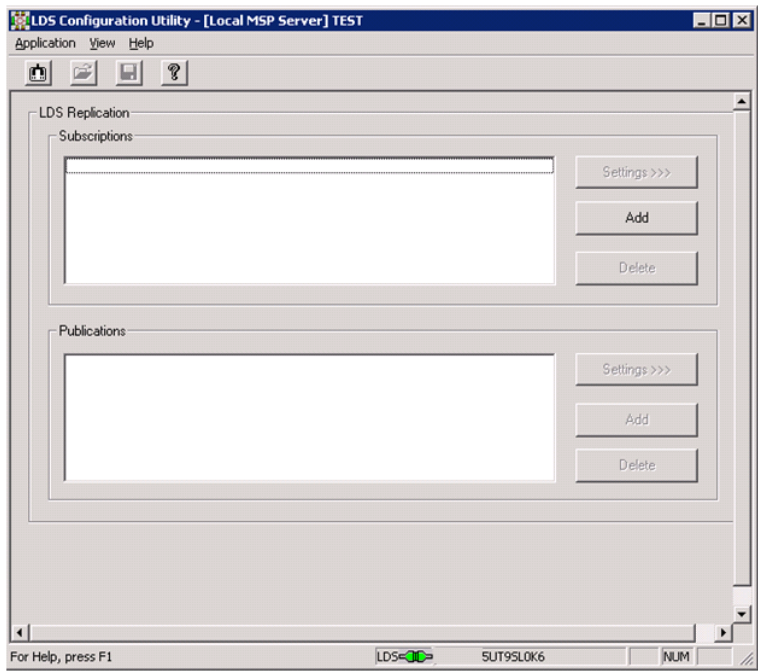
Click the **Help** buttons in dialog boxes to display information on the box's control elements.

2 USER INTERFACE

2.1 LDS CONFIGURATION WINDOW

The LDS Configuration main window allows you to setup other local database servers from one already configured. You give the target servers subscription names, which are displayed in the Subscriptions list.

A subscription can be applied to all departments or only to a specific department. These are defined as publications, and displayed in the Publications list.



2.2 APPLICATION MENU



| TO | CLICK |
|---|--|
| Switch to another local database server. | Switch LDS Server |
| Logon to another server or as another user. | Change Current User... |
| Display a dialog box that allows you to change your current logon Password setting. | Change Password... |
| To specify a TM client to use LDS instead of the default, RDS. | Use LDS Client Configuration... |
| Restore previous configuration settings from disk. | Restore |
| Save configuration settings and continue. | Save |
| Save configuration settings and exit LDS Configuration. | Save & Exit |
| Exit LDS Configuration. | Exit Includes a confirmation dialog box that allows you to save or abandon any new settings. |

2.3 VIEW MENU

| TO | CLICK |
|----------------------------------|-------------------|
| Toggle the toolbar ON and OFF | Toolbar... |
| Toggle the status bar ON and OFF | Status Bar |

2.4 STATUS BAR

The LDS Configuration window includes a status bar (along the bottom) that displays information on the operation of the LDS Configuration Utility.

| INDICATOR | EXPLANATION |
|---|---|
| For Help, press F1 | Directions for accessing online user guides concerning selected topics. |
| Log on success | Log on was successful and LDS Configuration is currently active. |
| (Menu selection help) | Various messages associated with the current menu selection. |
| LDS  | LDS service connection active. |
| LDS  | LDS service connection inactive. |
| CAP | Caps Lock key active. |
| NUM | Num Lock key active. |
| SCRL | Scroll Lock key active. |

2.5 LDS CLIENT

With LDS Configuration, you can specify a TM client to use LDS instead of the default, RDS. This increases performance when there are many machines in a network by distributing the workload. Open the LDS Client Computer Name dialog box to activate or deactivate the use of LDS on a client by selecting LDS Client Configuration on the Application menu. Use the drop-down list to specify the computer name of the LDS Client. Clicking OK opens the LDS Client Configuration dialog box.

Check **Use LDS** to cause the named client machine to use LDS. If necessary, select a new server from the **LDS Server Name** drop-down list. Un-checking **Use LDS** causes the named client machine to use RDS.

3 REPLICATION

3.1 REPLICATE ALL DEPARTMENTS

To replicate all departments:

1. Click the **Add** button in the Subscriptions area. This adds a new entry to the Subscriptions list.
2. Open the Subscription Configuration dialog box by clicking the **Settings >>>** button in the Subscriptions area.
3. Enter the **Subscription Name** in the edit box. This can be any name of your choice.
4. Enter the **Subscription Server** in the edit box. This must be a valid TM server on your network.
5. Select the type of subscription server (LDS or RDS) from the **Subscription Server Type** drop-down list.
6. Uncheck the database tables in the Subscription Databases area you don't want to replicate and click **OK** to return to the main window.
7. Click the **Add** button in the Publications area. This adds a new entry to the Publications list.
8. Open the Publication Configuration dialog box by clicking the **Settings >>>** button in the Publications area.
9. Enter a **Publication Name** in the edit box.
10. Choose a **Customer Name** from the drop-down list.
11. Choose All Departments from the Subscription Type drop-down list.
12. Choose the **Subscription Name** you want to publish from the drop-down list and click **Add ➔**.
13. Click **OK** to return to the main window.

3.2 REPLICATE A SPECIFIC DEPARTMENT

To replicate a specific department:

1. Click the **Add** button in the Subscriptions area. This adds a new entry to the Subscriptions list.
2. Open the Subscription Configuration dialog box by clicking the **Settings >>>** button in the Subscriptions area.
3. Enter the **Subscription Name** in the edit box. This can be any name of your choice.
4. Enter the **Subscription Server** in the edit box. This must be a valid TM server on your network.
5. Select the type of subscription server (LDS or RDS) from the **Subscription Server Type** drop-down list.
6. Uncheck the database tables in the Subscription Databases area you don't want to replicate and click **OK**.
7. Click the **Add** button in the Publications area. This adds a new entry to the Publications list.
8. Open the Publication Configuration dialog box by clicking the **Settings >>>** button in the Publications area.
9. Enter a **Publication Name** in the edit box.

10. Choose a **Customer Name** from the drop-down list.
11. Choose **Specific Department** from the **Subscription Type** drop-down list. Only one department can be added for the selected **Subscription Name**.
12. Choose the **Subscription Name** you want to publish from the drop-down list.
13. Open the Department dialog box by clicking the **Departments >>>** button.
14. Select the department you want to replicate from the directory tree and click **OK** to return to the main window.



Note! Selecting “Specific Department” results in all sub-departments being listed as well.

4 SUBSCRIPTION CONFIGURATION

Use this dialog box to configure a subscription. Enter the **Subscription Name** in the edit box. This can be any name of your choice. Enter the **Subscription Server** in the edit box. This must be a valid TM server on your network. Select the type of subscription server (LDS or RDS) from the **Subscription Server Type** drop-down list. Uncheck the database tables in the Subscription Databases area you don't want to replicate and click **OK**.

5 PUBLICATION CONFIGURATION

Use this dialog box to configure a publication for all departments or a single department. Enter a **Publication Name** in the edit box, choose a **Customer Name** from the drop-down list, and choose either **All Departments** or **Specific Department** from the **Subscription Type** drop-down list.

For the **All Departments** subscription type, use the **Add ->**, **<- Remove**, or **<- Change ->** buttons to modify the **Subscriptions** list from the **Subscription Name** drop-down list.

For the **Specific Department** subscription type, choose the **Subscription Name** you want to publish from the drop-down list, and click the **Settings >>>** button that appears when the Subscription Type is **Specific Department**. The Department dialog box is opened where you can choose the department you want to replicate from a tree structure.



Note! Selecting “All Departments” and then “Specific Department” (or vice versa) will not result in a merged subscription. The last selected Publication prevails. It is also not possible to apply a subscription to multiple specific departments (i.e., they are not merged).