

MX-ONE Traffic Manager 1.4 – Server Configuration

USER GUIDE



NOTICE

The information contained in this document is believed to be accurate in all respects but is not warranted by Mitel Networks™ Corporation (MITEL®). Mitel makes no warranty of any kind with regards to this material, including, but not limited to, the implied warranties of merchantability and fitness for a particular purpose. The information is subject to change without notice and should not be construed in any way as a commitment by Mitel or any of its affiliates or subsidiaries. Mitel and its affiliates and subsidiaries assume no responsibility for any errors or omissions in this document. Revisions of this document or new editions of it may be issued to incorporate such changes.

No part of this document can be reproduced or transmitted in any form or by any means - electronic or mechanical - for any purpose without written permission from Mitel Networks Corporation.

TRADEMARKS

The trademarks, service marks, logos and graphics (collectively "Trademarks") appearing on Mitel's Internet sites or in its publications are registered and unregistered trademarks of Mitel Networks Corporation (MNC) or its subsidiaries (collectively "Mitel") or others. Use of the Trademarks is prohibited without the express consent from Mitel. Please contact our legal department at legal@mitel.com for additional information. For a list of the worldwide Mitel Networks Corporation registered trademarks, please refer to the website: <http://www.mitel.com/trademarks>.

© Copyright 2018, Mitel Networks Corporation

All rights reserved

CONTENTS

1	TRAFFIC MANAGER SERVERS	1
1.1	SERVER IDENTIFICATION	1
1.1.1	SERVER ID ADMINISTRATION	1
1.1.2	SERVER IDENTIFICATION FIELDS	1
1.2	TM SERVER CONFIGURATION HELP	1
1.2.1	TIPS FOR USING HELP	2
1.2.2	PRINTING HELP	2
2	USER INTERFACE	3
2.1	TM SERVER CONFIGURATION WINDOW	3
2.2	APPLICATION MENU	3
2.3	SERVER MENU	3
2.4	FIELD CONTROL BUTTONS	4
2.4.1	SERVER NAME	4
2.4.2	SERVER MACHINE	4
2.4.3	RDS MACHINE	4
2.4.4	SQL INSTANCE	4
2.4.5	TIME ZONE	4
3	SERVERS.....	5
3.1	NEW SERVER	5
3.2	EDIT SERVER	5
3.3	DELETE SERVER	5
3.4	SORT SERVER RECORDS	6
4	APPENDIX	7

1 TRAFFIC MANAGER SERVERS

1.1 SERVER IDENTIFICATION

Use the MX-ONE Traffic Manager (TM) Server Configuration Utility to build and maintain a list of available database servers. Mitel's TM relies on uniquely identified servers for centralized database and application support services. TM applications and utilities accessing network servers through security services require user logon and server selection. The Server Configuration Utility allows you to specify names and other attributes for the servers appearing in the User Logon TM Servers selection list.

1.1.1 SERVER ID ADMINISTRATION

The Server Configuration Utility enables you to manage all aspects of assigning and administering identifiers. Its administrative functions allow you to:

- Create new server identifiers
- Edit existing server identifiers
- Delete existing server identifiers
- Sort server identifiers



Note! Using this utility does not affect network identifiers for TM servers.

1.1.2 SERVER IDENTIFICATION FIELDS

The Server Configuration Utility enables you to manage all aspects of assigning and administering identifiers. In addition, you can assign server names for non-existent servers, which allows you to have server identifiers in place when new servers go into service. The following five data fields are involved in the server configuration process.

DATA FIELD	EXPLANATION
Server Name	Can be any alphanumeric string. However, an identifier that provides useful indication of the server's function or location is strongly recommended.
Server Machine	Machine name in which TM Security Data Server resides.
RDS Machine	Machine name where the Remote Data Server resides. Can be the same machine.
SQL Machine	Instance name of SQL Server.
Time Zone	Global time zone in which server resides. Based on server's or the server's clients' geographical displacement from Greenwich Mean Time zone.



Note! Using this utility does not affect network identifiers for TM servers.

1.2 TM SERVER CONFIGURATION HELP

Help topics are displayed in a tri-pane Explorer View Help window where **Contents**, **Index**, and **Search** tabs appear to the left of the topic pane, and the selected topic appears on the right in the topic pane. The **Contents** tab is the default, and stays synchronized with the topic displayed in the topic pane. Click the **Index** tab to search for topics by using an index of Help subjects. Click the **Search** tab to use a full-text search for specific words or phrases.

1.2.1 TIPS FOR USING HELP

When viewing Help, you can maximize the window or resize it if you want. Click **Help Topics** to show or hide the Navigation Pane. Click **>>** to go to the next topic in the browse sequence. Click **<<** to go to the previous topic in the browse sequence. The **Options** menu provides additional display controls.

1.2.2 PRINTING HELP

Click the **Print** button to print the current topic. To print the entire help file you need to have Microsoft Word or Word Viewer installed on the PC. Word Viewer is a free download from Microsoft's web site.

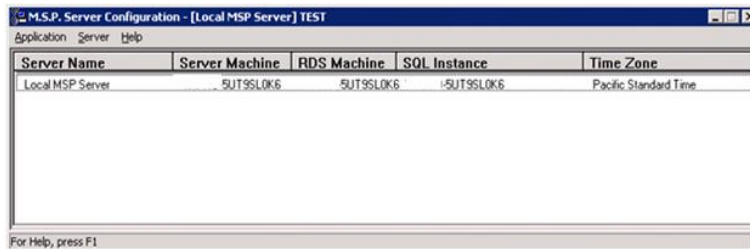
To print the entire help file

1. Right-click on the *TMServHelp.doc* file in the *MSP_SMRSHELP* directory.
2. Click **Print** on the pop-up menu.

2 USER INTERFACE

2.1 TM SERVER CONFIGURATION WINDOW

The main window for the TM Server Configuration utility consists of menus, a name assignment window, and combined column header/sort controls. The main display includes a row of labeled controls that are keyed to the fields in the server configuration listing. The labels on these buttons serve as headers for the fields in the configuration entries. The buttons themselves are controls that allow you to sort all of the configuration entries based on a given field. That is, to arrange the list of configuration entries in alphanumerically ascending order for a specific column of information, click the header/sort button for that column.



2.2 APPLICATION MENU

TO	SELECT
Logon a different server or as another user.	Change Current User...
Display a dialog box that allows you to assign a new password to your account.	Change Password...
Print a listing of assigned servers.	Print...
Display a Windows dialog box that allows you to specify (among other things) a network printer, print page format, and paper size.	Print Setup...
Terminate your current session and disconnect from the database.	Exit

2.3 SERVER MENU

TO	SELECT
Display a dialog box that lets you create a new Server Configuration entry.	New...
Display a dialog box that allows you to modify parameters for an existing Server Configuration entry.	Edit...
Remove the selected Server Configuration entry.	Delete...
Sort configuration entries in alphanumerically ascending order based on Server Name fields.	Sort by ▶ ServerName
Sort configuration entries in alphanumerically ascending order based on Server Machine fields.	Sort by ▶ Server Machine
Sort configuration entries in alphanumerically ascending order based on RDS Machine fields.	Sort by ▶ RDS Machine

TO	SELECT
Sort configuration entries in alphanumerically ascending order based on SQL Instance fields.	Sort by ▶ SQL Instance
Sort configuration entries in alphanumerically ascending order based on Time Zone fields.	Sort by ▶ Time Zone

2.4 FIELD CONTROL BUTTONS

The main window includes field control buttons that are keyed to the fields in the server configuration listing. The labels on these buttons serve as headers for the fields in the configuration entries. The buttons themselves are controls that allow you to sort all of the configuration entries based on a given field. That is, to arrange the list of configuration entries in alphanumerically ascending order for a specific column of information, click the header/sort button for that column. These sort controls provide the same functionality as the **Sort by ▶** command in the **Server** menu.

2.4.1 SERVER NAME

Click this column button to sort configuration entries in alphanumerically ascending order based on Server Name fields. You can also select **Sort by ▶ Server Name** from the **Server** menu.

2.4.2 SERVER MACHINE

Click this column button to sort configuration entries in alphanumerically ascending order based on Server Machine fields. You can also select **Sort by ▶ Server Machine** from the **Server** menu.

2.4.3 RDS MACHINE

Click this column button to sort configuration entries in alphanumerically ascending order based on RDS Machine fields. You can also select **Sort by ▶ RDS Machine** from the **Server** menu.

2.4.4 SQL INSTANCE

Click this column button to sort configuration entries in alphanumerically ascending order based on SQL Instance fields. You can also select **Sort by ▶ SQL Instance** from the **Server** menu.

2.4.5 TIME ZONE

Click this column button to sort configuration entries in alphanumerically ascending order based on Time Zone fields. You can also select **Sort by ▶ Time Zone** from the **Server** menu.

3 SERVERS

3.1 NEW SERVER

To add a new server record:

1. Select **New...** from the **Server** menu. The New Server Information dialog box is opened.
2. Enter new identification parameters for the **Server Name**, **Server Machine**, **RDS Machine**, and **SQL Instance** fields. The default **RDS Machine** and **SQL Instance** are filled in for you after you enter the **Server Name** and **Server Machine**. You can change them if you wish.
3. Select the appropriate time zone from the **Time Zone** drop-down list.
4. Click **OK** to return to the main window.

When completed successfully, the new assignment appears in the list displayed in the server configuration window.

3.2 EDIT SERVER

To edit a server record:

1. Highlight the entry you want to modify.
2. Select **Edit** from the **Server** menu. The Edit Server Information dialog box is opened.
3. Enter new assignment(s) into the appropriate fields.
4. Press **Enter** or select **OK**.

The modified record appears in the list displayed in the name assignment window.

3.3 DELETE SERVER

To delete a server record:

1. Highlight the entry (or entries) you want to delete.
2. Select **Delete...** from the **Server** menu. The Delete Server Confirmation dialog box is opened.
3. Confirm your selection by clicking **Yes**.

The existing assignment identified in the Server Name field is removed from the list of records.

3.4 SORT SERVER RECORDS

To sort server records:

1. Click the column header/sort button for the field on which you want to base the new arrangement.
- or -
2. Select the field name on that you want to sort on from the **Sortby** command in the **Server** menu.

The server configuration records are arranged accordingly.

4 APPENDIX

Server Name

Click this column button to sort configuration entries in alphanumerically ascending order based on Server Name fields. You can also select **Sort by ▶ Server Name** from the **Server** menu.

Server Machine

Click this column button to sort configuration entries in alphanumerically ascending order based on Server Machine fields. You can also select **Sort by ▶ Server Machine** from the **Server** menu.

RDS Machine

Click this column button to sort configuration entries in alphanumerically ascending order based on RDS Machine fields. You can also select **Sort by RDS ▶ Machine** from the **Server** menu.

SQL Instance

Click this column button to sort configuration entries in alphanumerically ascending order based on SQL Instance fields. You can also select **Sort by ▶ SQL Instance** from the **Server** menu.

Time Zone

Click this column button to sort configuration entries in alphanumerically ascending order based on Time Zone fields. You can also select **Sort by ▶ Time Zone** from the **Server** menu.