



# Unify OpenScape 4000 Assistant/Manager

---

## Java Husim Phone Tester Web (J-HPT Web)

### **Administrator Documentation**

A31003-H34B0-M109-01-76A9

**Atos**

Provide feedback to further optimize this document to [edoku@atos.net](mailto:edoku@atos.net)

As reseller please address further presales related questions to the responsible presales organization at Unify or at your distributor. For specific technical inquiries you may use the support knowledgebase, raise - if a software support contract is in place - a ticket via our partner portal or contact your distributor.

Our Quality and Environmental Management Systems are implemented according to the requirements of the ISO9001 and ISO14001 standards and are certified by an external certification company.



Copyright © Unify Software and Solutions GmbH & Co. KG 08/11/2023  
All rights reserved.

Reference No.: A31003-H34B0-M109-01-76A9

The information provided in this document contains merely general descriptions or characteristics of performance which in case of actual use do not always apply as described or which may change as a result of further development of the products.  
An obligation to provide the respective characteristics shall only exist if expressly agreed in the terms of contract.

Availability and technical specifications are subject to change without notice.

Unify, OpenScape, OpenStage and HiPath are registered trademarks of Unify Software and Solutions GmbH & Co. KG. All other company, brand, product and service names are trademarks or registered trademarks of their respective holders.

[atos.net](http://atos.net)

# Contents

<b>1 Introduction.....</b>	<b>4</b>
1.1 Supported Web Browsers.....	4
<b>2 Test Interface.....</b>	<b>5</b>
2.1 Enabling the Open Stage Test Interface.....	5
<b>3 jHPT Web Interface.....</b>	<b>9</b>
3.1 Main Menu Page.....	9
3.1.1 Supported Models.....	9
3.2 Help Page.....	9
3.3 Connecting to a phone.....	10
3.3.1 IP phones page.....	11
3.3.2 TDM phones page.....	12
3.3.3 Events values and meaning.....	13
<b>Index.....</b>	<b>16</b>

# 1 Introduction

Java Husim Phone Tester (jHPT) for Web is a web tool that allows to remotely control telephones via the Internet. It is used to simply reproduce the real phone behavior in a web interface and to generate events to be sent to the controlled phones.

## 1.1 Supported Web Browsers

JHPT Support is available for standard Chrome, Firefox and Microsoft browsers.



## 2 Test Interface

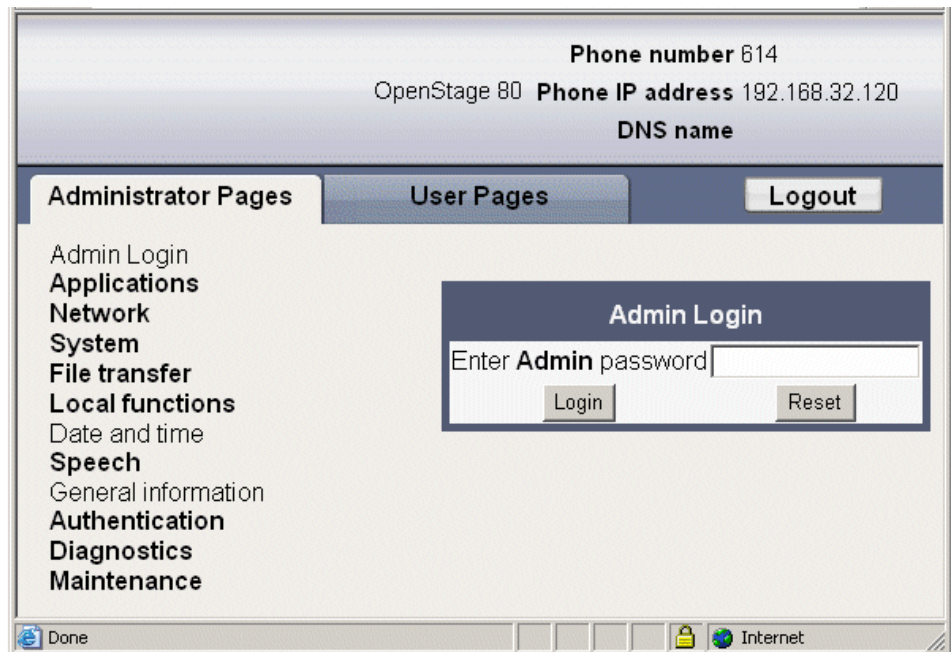
IP phones (and TDM phones from CP family) have a test interface implemented that allows the exchange of request commands and indications between the phone and the remote software client.

### 2.1 Enabling the Open Stage Test Interface

The test interface is enabled by default. However, in older OpenStage SW, it must be activated manually.

When using old IP models (OpenStage devices), the user must enable the test interface. This can be done by loading a certification key file called a dongle key<sup>1</sup> into the telephone. Every phone version has a different certification, which must be loaded separately into the phone in order to activate the test interface whenever the phone firmware is updated.

To load the dongle key into the telephone, you will need to know the telephone IP address as well as the password to access the telephone data (default password: 123456). All IP telephone models have a web interface containing all the related telephone configuration information. To access this page, just type the following into the address bar of the web browser : "https://" + telephone IP address.



**Figure 1: Main page web interface.**

From this page, as shown on Figure 1, you can access the following services for the telephone:

---

<sup>1</sup> Dongle key: Certificate file which enables open stage test interface.

- User pages This area contains all user-assigned configurations:
  - User login;
  - Date and Time;
  - Audio;
  - Configuration;
  - Phone;
  - Locality;
  - Authentication.
- Administrator pages This area contains all administrator-assigned configurations:
  - Admin Login;
  - Applications;
  - Network;
  - System;
  - File transfer;
  - Local functions;
  - Date and time;
  - Speech;
  - General information;
  - Authentication;
  - Diagnostics;
  - Maintenance.

On both the user pages and administrator pages, you can quickly obtain a comprehensive overview of all the information about the telephone. To gain complete access to the telephone data, you must log in by entering the password when prompted for it. In addition, you will also need to know the telephone firmware version because each one has its own dongle key. You can check the current telephone firmware by clicking on the "General information" link on the Administrator tab.

The main way to load the dongle key file into the telephone is using FTP. The file must be available on an FTP server with a valid IP address. On the telephone file transfer page (see Figure 2), you can enter the FTP data which will be used to download the dongle

key file from the FTP server to the telephone. The option "start download" in the "After submit" field must be enabled.

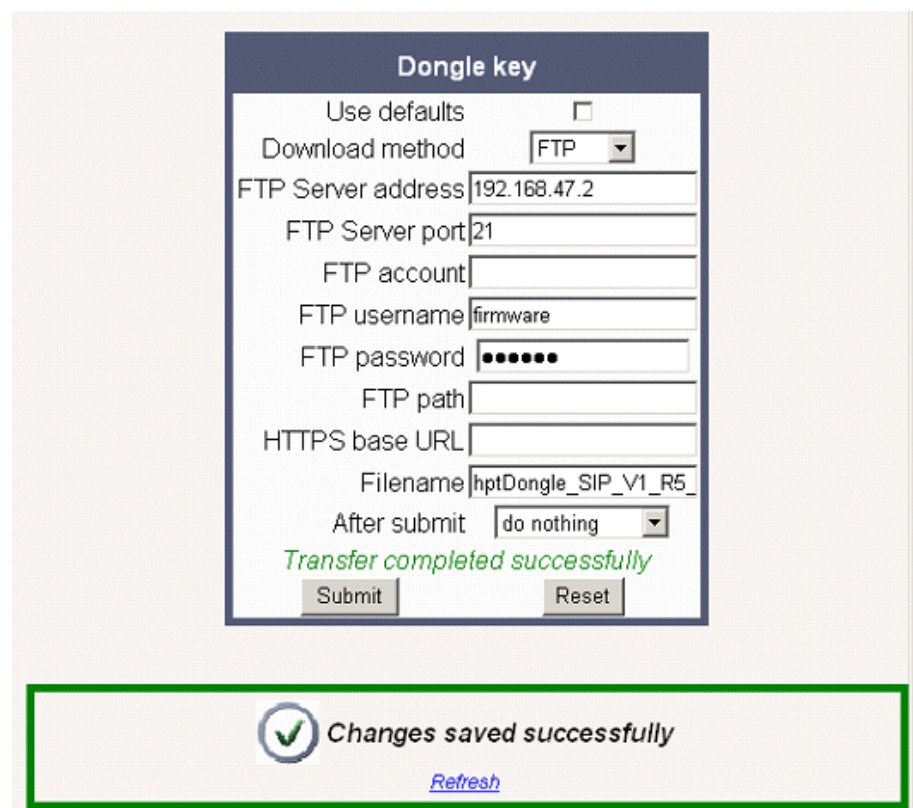
The screenshot displays the 'Dongle key' configuration page. At the top, it shows 'Phone number 614', 'OpenStage 80', 'Phone IP address 192.168.32.120', and 'DNS name'. The sidebar on the left lists various administrative functions, with 'Dongle key' highlighted under the 'File transfer' section. The main form contains the following fields and options:

- Use defaults:** A checkbox that is currently unchecked.
- Download method:** A dropdown menu set to 'FTP'.
- FTP Server address:** A text field containing '192.168.47.2'.
- FTP Server port:** A text field containing '21'.
- FTP account:** A text field.
- FTP username:** A text field containing 'firmware'.
- FTP password:** A text field with masked characters (dots).
- FTP path:** A text field.
- HTTPS base URL:** A text field.
- Filename:** A text field containing 'ngle\_SIP\_V1\_R5\_0.key'.
- After submit:** A dropdown menu set to 'start download'.
- Buttons:** 'Submit' and 'Reset' buttons at the bottom of the form.

**Figure 2: Telephone file transfer page.**

If this operation was completed successfully, a corresponding message (see Figure 3) will be displayed; otherwise, an error message is displayed.

## Test Interface



The screenshot displays a web-based configuration interface titled "Dongle key". It contains several input fields and a confirmation message. The fields are as follows:

- Use defaults:** A checkbox that is currently unchecked.
- Download method:** A dropdown menu set to "FTP".
- FTP Server address:** A text box containing "192.168.47.2".
- FTP Server port:** A text box containing "21".
- FTP account:** A text box that is empty.
- FTP username:** A text box containing "firmware".
- FTP password:** A text box filled with ten black dots.
- FTP path:** A text box that is empty.
- HTTPS base URL:** A text box that is empty.
- Filename:** A text box containing "hptDongle\_SIP\_V1\_R5\_".
- After submit:** A dropdown menu set to "do nothing".

Below the input fields, a green message states "Transfer completed successfully". At the bottom of the form are two buttons: "Submit" and "Reset".

Below the form, a green-bordered box contains a green checkmark icon, the text "Changes saved successfully", and a blue "Refresh" link.

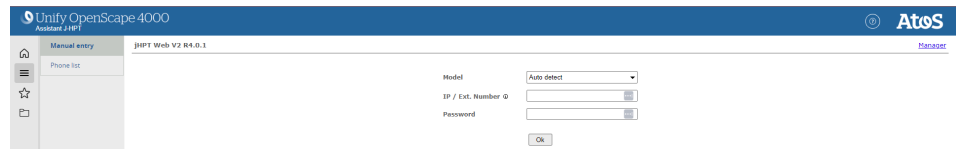
**Figure 3: Transfer completed successfully message.**



## 3 jHPT Web Interface

### 3.1 Main Menu Page

The jHPT Web main menu page is shown in Figure 4.



**Figure 4: jHPT Web main menu page.**

The elements marked in the above figure, have the following description:

- **[1] Model:** the telephone model  
The drop-down menu displays the list of available models.  
By default, the **Auto detect** option is selected. This allows the jHPT to detect the model and the number of key modules. The minimum phone LW versions are applicable.
- **[2] IP address:** the telephone IP address or extension number  
For OS4K only, this field displays the telephone extension number.
- **[3] Password:** the password for test interface access  
The default password for IP phones is 123456.
- **[4] Manager:** the link to navigate to the Manager page.  
For more information, see the [Help Page](#) on page 9 section.

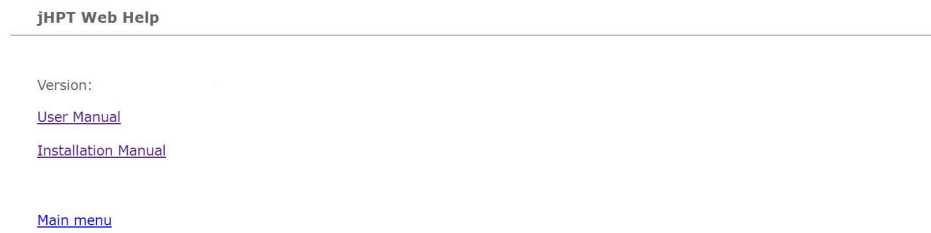
#### 3.1.1 Supported Models

jHPT Web currently supports the following telephone models:

- OpenStage 15/20/30/40/60/80 SIP&HFA;
- OpenScale Desk Phone IP 35G/55G SIP&HFA;
- OpenScale Desk Phone CP 100/110/200/210/400/410/600/700/710 SIP&HFA;
- OpenScale Desk Phone CP 200/400 TDM (OS4K only)

### 3.2 Help Page

On the jHPT Web Help page (shown in Figure 5) you can see the version information for jHPT Web and download the user and installation manuals. You can also go to the main menu page by clicking on the Main Menu link.



**Figure 5: Help page.**

### 3.3 Connecting to a phone

Follow the steps below to establish the connection to a phone:

- 1)** Navigate to the **Main Menu** page.
- 2)** In the **Model** field, keep the default option: **Auto detect**.
- 3)** In the **IP address** field, enter the IP address of the phone or the extension number.

The IP address can be used to connect directly to HFA or SIP phones.

The extension number (OpenScape 4000 only) can be used from CP Phone family for both TDM and HFA via PBX using Cornet (minimum phone LW versions apply).

- 4)** Enter the password in the **Password** field.

---

**NOTICE:** The password is needed only for the IP phone models.

---

- 5)** Click **Ok**.

If the phone you are trying to connect to does not have a software version that supports auto detection, you need to select the phone model manually from the drop-down list.

When selecting a phone model from the drop-down list, specific options are displayed, based on the selected model.

For IP devices, you can manually select the jHPT protocol and the number of key modules (see Figure 6).

TLS is the standard protocol used for modern IP phones where jHPT connects directly via the phone's IP address. Cornet can be used for TDM and HFA CP Phones to connect via the PBX using Cornet and the extension number (minimum phone LW versions apply).

---

**NOTICE:**

Please note that the CP700 and CP710 phones interact slowly when connected via Cornet.

---

jHPT Web [Manager](#)

Model: DeskPhoneIp 35G

IP address:

Password:

jHPT Protocol @: TLS

Key Modules: 0

Ok

**Figure 6: Options available for IP devices**

For TDM devices, the jHPT protocol is unique and allows you to select the number of key modules (see Figure 7).

jHPT Web [Manager](#)

Model: OpenScape DeskPhone CP 200T

IP / Ext. Number @:

jHPT Protocol @: Comet

Key Modules: 0

Ok

**Figure 7: Options available for TDM devices**

### 3.3.1 IP phones page

Unify OpenScape 4000 Assistant jHPT [AtoS](#)

Manual entry Phone list

OpenScape DeskPhone CP 400 [1] [Phone settings](#) [Help](#) [Main menu](#)

Connect [2]

[4] Events

Acoustic Events

Event:

Value:

Device Events

Device:

Status:

Call Events

Device Id:

Event:

See Version:

[5] Additional keys

Fast dialing: Number  Send

Restart phone

[6] Phone Tools

Option:  Send

Download Phone.db

Download most recent jHPT log

Zip and download all jHPT logs

[3]

[7] [8] [9]

**Figure 8: IP phone page layout**

The IP phone page includes the following components:

- [1]: the IP phone model
- [2]: the **Connect/ Disconnect** button
- [3]: the graphic representation of the phone
- [4] **Events**: the values for **Acoustic Events**, **Device Events**, **Call Events** and the phone's software version
- [5] **Additional keys**: keys for fast dialing and restarting the phone
- [6] **Phone Tools**: additional phone tools
- [7] **Phone settings**: the link to the phone's WBM page

**[8] Help:** the link to the jHPT help page

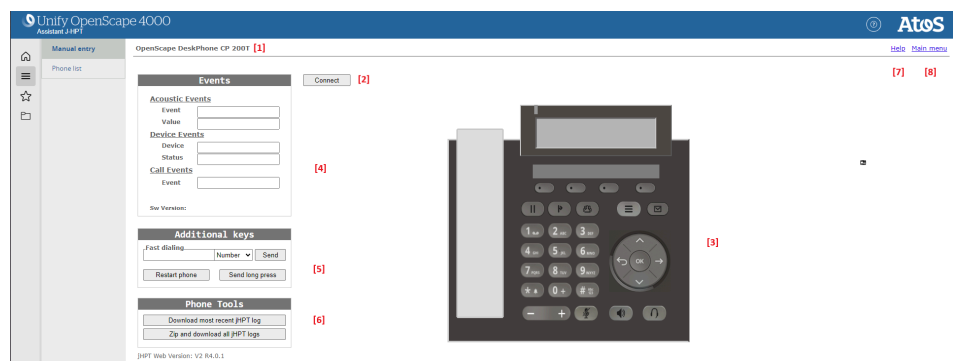
**[9] Main menu:** the link to the jHPT main menu page

When the phone's page is displayed, you can interact with the phone after by clicking the **Connect** button.

It is possible to restart the phone from jHPT, by clicking **Restart phone**, in the **Additional keys** menu. After restarting the phone, you must click **Connect** again.

In case of errors, you can download the current log or all jHPT logs from the **Phone Tools** menu.

### 3.3.2 TDM phones page



**Figure 9: TDM phone page layout**

The TDM phone page includes the following components:

**[1]:** the TDM phone model

**[2]:** the **Connect/ Disconnect** button

**[3]:** the graphic representation of the phone

**[4] Events:** the values for **Acoustic Events**, **Device Events**, **Call Events** and the phone's software version

**[5] Additional keys:** keys for fast dialing, restarting the phone and sending long press.

**[6] Phone Tools:** additional phone tools

**[7] Help:** link to the jHPT help page

**[8] Main menu:** link to the jHPT main menu page

When the phone's page is displayed, you can interact with the phone after by clicking the **Connect** button.

Some features can be activated or deactivated only by long pressing specific keys (e.g. the silent mode feature can be activated by long pressing the \* key). This can be done via jHPT, by using the **Send long press** button in the **Additional keys** menu, then pressing the key on the graphic representation of the phone

It is possible to restart the phone from jHPT, by clicking **Restart phone**, in the **Additional keys** menu. After restarting the phone, you must click **Connect** again.

In case of errors, you can download the current log or all jHPT logs from the **Phone Tools** menu.

---

**IMPORTANT:** The following minimum LW versions are required for full functionality:

- For CP200 TDM: V1R0.1.1
  - For CP400 TDM: V1R0.3.1
- 

### 3.3.3 Events values and meaning

**Table 1: LED Mode**

LED Mode	Description
0	Broken flutter, a combination of blinking and flutter.
1	Flutter, fast on and off.
2	Off. Lamp is off.
3	Steady. Lamp is continuously lit.
4	Blink. Lamp is blinking.
5	Unknown (the switching function cannot determine the mode of the LED).
6 - 100	All values in this range are switching function specific.

**Table 2: LED Color**

LED Color	Description
0	No color
1	Red
2	Yellow
3	Green
4	Blue
5	Unknown (the switching function cannot determine the color of the LED). Default if this parameter is not present.
6	White
7 - 100	All values in this range are switching function specific.



**Table 3: Device Event**

Device	Value
HANDSET	0
HEADSET	1
SPEAKERPHONE	2
OPENS LISTENING	3
RINGER	55

**Table 4: Device Status**

Status	Value
ACTIVE	0x01
INACTIVE	0x00

**Table 5: Acoustic Event**

Event	Value
RING_TONE1	
RING_TONE2	1
RING_TONE3	2
RING_TONE4	3
RING_TONE5	4
RING_TONE6	5
RING_TONE7	6
RING_TONE8	7
RING_TONE9	8
RING_TONE10	9
DIAL_TONE	10
SECOND_DIAL_TONE	11
RINGING_TONE	12
BUSY_TONE	13
SPECIAL_INFORMATION_TONE	14
CALL_WAITING_TONE	15
US_INTERNAL_CALL_WAITING_TONE	16

Event	Value
POSITIVE_INDICATION_TONE	17
CONFERENCE_TONE	18
NEGATIVE_INDICATION_TONE	19
INVALID_ENTRY_TONE	20
WARNING_BEEP	21
ERROR_MESSAGE_TONE	22
POSITIVE_ACK_TONE	23
KEYCLICK_TONE	24
DTMF_TONE	25
DTMF_SILENCE_TONE	26
NO_TONE	27
AUTO_ANSWER_TONE	28
AUDIO_TONE_MAX	29

**Table 6: Acoustic Event Status**

Status	Value
START	0x01
STOP	0x00

# Index

## A

acoustic event [14](#)  
acoustic event status [15](#)

## D

device event [14](#)  
device status [14](#)

## L

LED color [13](#)  
LED mode [13](#)

## T

telephone file transfer page [7](#)